

Epsilon Clock™ Antenna Post Mount Kit

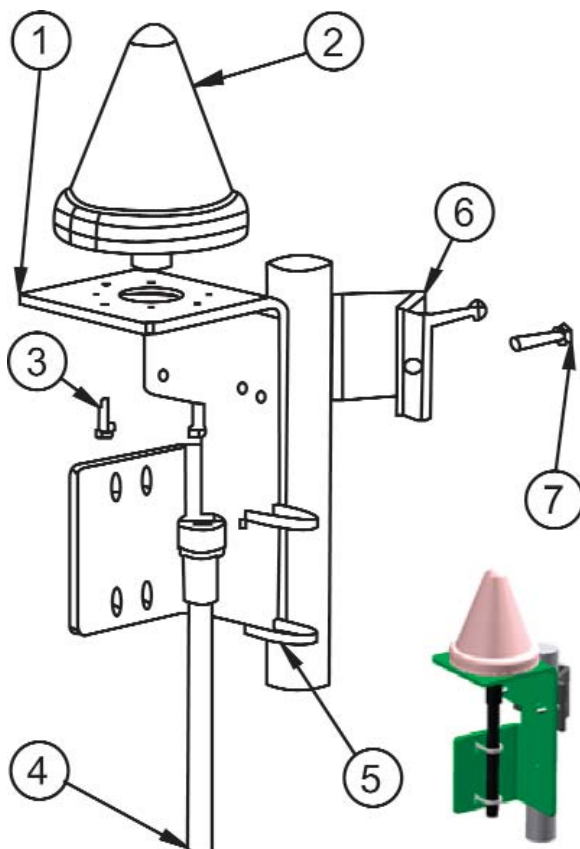
35 dB GPS Antenna Preliminary

The post mounting kit allows you to mount the 35 dB GPS antenna onto a vertical or horizontal pole.

35 dB GPS Antenna Location

The steps needed to assemble the kit are as follows:

1. Clamp the GPS antenna (2) on the post bracket (1).
2. Attach the GPS antenna (2) to the post bracket (1) with the four screws (3).
3. Insert the cable socket (4) into the antenna socket.
4. Insert the plastic cable tie (5).
5. Wind the heat shrink sleeve around the connector adapter.
6. Rotate the post clamp (6) to obtain vertical and horizontal mounting.
7. Attach the post bracket (1) to the pole with the post clamp (6), use the two screws (7), bolts and lock washers, aluminum casing with washer.



1. Post Bracket
2. GPS Antenna
3. Screws
4. GPS Cable
5. Plastic cable tie
6. Post Clamp
7. Screws & Washers