



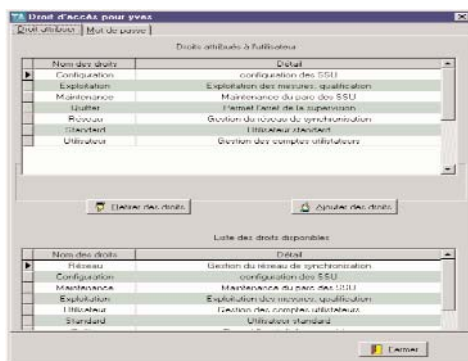
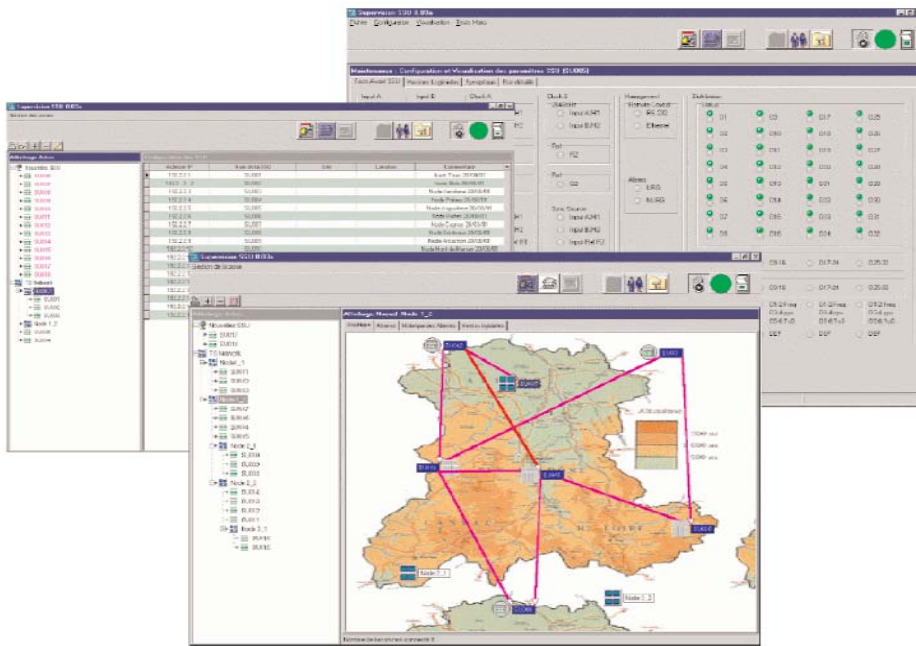
EpSync Manager

DESCRIPTION

Through a comprehensive and intuitive Graphical User Interface, EpSync Manager provides real-time management with continuous supervision of the whole synchronization network associated to transmission telecom network.

Its architecture provides powerful features at optimized costs. Indeed it runs on cost-effective, PC-based workstations with the widely used standard SNMP protocol ensuring seamless integration into any customer application.

Packaged with an Epsilon Synchronization Supply Unit, EpSync Manager allows companies to reach the highest standard in terms of quality of service for their telecom networks.



FULL MANAGEMENT OF SYNCHRONIZATION NETWORK

The synchronization network is built with linked PRCs and SSUs following a distributed clock method. Each synchronization device can be managed by one or more PC-based supervision stations. Every station is linked to the IP network on which flows all the configurations and monitoring messages.

Each station equipped with EpSync Manager (PC platform and software package) ensures full remote supervision and management of the connected and declared SSUs, with access security provided through multiple-user profile rights protected by passwords.



FEATURES

EpSync Manager provides powerful tools to configure and display all the synchronization links and SSUs with their current status and performances.

Management Functions

- Operational management capabilities
- Management of synchronization nodes and operating modes
- SSU configuration and re-configuration
- Alarm management, fault monitoring, and event logger
- Performance monitoring, logging, and graphic display such as MTIE and TDEV characteristics of selected links
- Inventory management
- Remote software and firmware upload towards SSUs achieved through FTP without disruption of synchronization service

Powerful Graphic Presentation

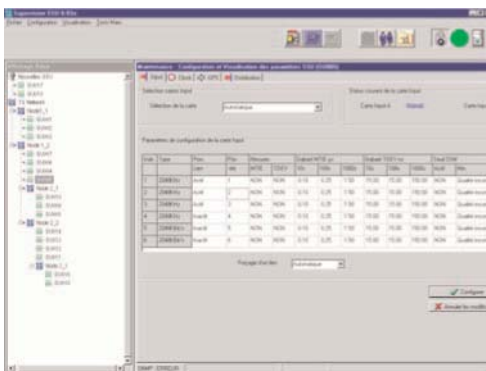
- The full network structure is displayed both in tree format and geographic map to optimize the user friendliness
- On map views, intuitive color codes report links/devices selection and performances ensuring a quick understanding of the overall synchronization status
- Clicking on the displayed objects provides further detailed information such as SSU inventory, module reference, configuration, and status

Security

- Multi-user access levels are defined and protected with passwords. Each user must have the specific right for function access such as Administration, Configuration, Maintenance, etc.

Characteristics

- Microsoft Windows 2000 and XP Pro PC-based management station
- The SSU specific functions of the manager are integrated in a SNMP manager
- The SSU configuration, written in its Management Information Base (MIB), is remotely initialized and modified by the manager.
- The SSU configuration is stored in management central database (MySQL open source data base).
- IP Network Interface through 10 Base-T Ethernet port
- Information is exchanged with following protocol:
 - SNMP V1 and V2 (MIB objects + Get/Set/Trap)
 - FTP (upload of software release, download/upload of configuration)
 - Windows ANSI Telnet for basic configuration



The SSUWIN Local Manager

For local maintenance and service control of your SSUs, the SSUWin package is available.

This package executes a subset of the EpSync Manager functions and specific service control routines for SSU maintenance and installation. SSUWin can operate on a portable PC that is plugged into the SSU through the Ethernet port.